

What's New with Eaton DR?

Ryan Brager, Product Manager

May 16, 2024



Powering Business Worldwide

© 2024 Eaton. All rights reserved.

Agenda

- Product Releases/Updates
- Product Development
- Projects Under Consideration
- What ideas do you have?
- Wrap Up

Product Releases

Released: LCR-7600

Simple and Fast Installation

- No cellular setup required at site.
- Terminal connection on board.
- Retrofit into 3rd party equipment.

Capacity and Grid Services Support

- Quick response to dispatch request
- No pre-conditioning required
- Flexible control strategies
- Immediate acknowledgement
- Control adapts to connected resource



Grid Edge Monitoring and Autonomous Control

- Monitor and report Line Voltage and Frequency
- Monitor and report Load Consumption
- Under Frequency and Voltage deviation response

Forecasting, M&V and Appliance Monitoring

- Reports Interval KWh consumption for load
- Reports Demand of the load
- Data Available to detect potential failure

Yukon Support for LCR 7600C

A new cellular / Wi-Fi LCR model

- Event management
- Inventory and account management
- Program enrollments
- Data display and export capabilities
- Asset availability
- Device specific actions

The screenshot displays the Eaton AMI (Advanced Metering Infrastructure) web interface. The top navigation bar includes the Eaton logo and several menu items: AMI, Demand Response, Volt/Var, Assets, Tools, and Admin. The breadcrumb trail indicates the current location: Home / Demand Response / Setup / Cell LCR 76 - LdPgm-R1. The main content area is titled "Load Program: Cell LCR 76 - LdPgm-R1" and features an "Actions" button. The interface is divided into two columns. The left column contains the "General" section with fields for Name, Type, Operational State, and Constraint, followed by "Trigger Threshold Settings" for Trigger Offset and Restore Offset. The right column contains the "Gears" section, which is a table listing various Eaton Cloud Cycle programs. Below the Gears section is the "Control Window" section with two rows for "Use Window 1" and "Use Window 2", both set to "No". At the bottom, there are three tabs: "LOAD GROUPS" (selected), "MEMBER CONTROL", and "NOTIFICATION". The "LOAD GROUPS" tab shows a table with one entry: "Cell LCR 76 - LdGrp-R1" of type "Eaton Cloud Group".

Name	Type
Cell LCR - Std-100-None	Eaton Cloud Cycle
Cell LCR - Std-100-R-I_O	Eaton Cloud Cycle
Cell LCR - Std-100-R-I	Eaton Cloud Cycle
Cell LCR - Std-100-R-O	Eaton Cloud Cycle

Name	Type
Cell LCR 76 - LdGrp-R1	Eaton Cloud Group

LCR 7600C additional data points

Device provides some new data options

- Hourly delivered kWh
- 15-minute kWh per interval
- Hourly demand
- Device power lost flag that may be monitored using a data monitor

Device Points					
<div>+ Create</div>					
<div>Filter By: <div>Select Point Type(s)</div> <div>Filter</div> <div>Download</div></div>					
Point Name ↑	Attribute	Value/State	Date/Time	Point Type	Point Offset
BLC Connection Loss Counter	BLC Connection Loss Counter	107 Counts	01/09/2024 10:35:50	Analog	45
Blink Count	Total Blinks and Outages	113 Counts	01/03/2024 15:36:54	Analog	1
Comms Loss Count	Comms Loss Count	4 Counts	01/09/2024 13:56:15	Analog	2
Current Active Radio	Current Active Radio	<div>Cell</div>	01/08/2024 18:25:32	Status	14
Delivered kWh Channel 1	Delivered kWh Channel 1	1,116.643 kWh	01/09/2024 13:00:00	Analog	52
Delivered kWh Channel 2	Delivered kWh Channel 2	1,160.607 kWh	01/09/2024 13:00:00	Analog	55
Delivered kWh Per Interval Channel 1	Delivered kWh per Interval Channel 1	0.000 kWh	01/09/2024 13:45:00	Analog	51
Delivered kWh Per Interval Channel 2	Delivered kWh per Interval Channel 2	0.000 kWh	01/09/2024 13:45:00	Analog	54
Demand Channel 1	Demand Channel 1	0.000 kW	01/09/2024 13:00:00	Analog	50
Demand Channel 2	Demand Channel 2	0.000 kW	01/09/2024 13:00:00	Analog	53
Device Power Lost	Device Power Lost	<div>False</div>	01/03/2024 15:36:54	Status	15
Firmware Update Status	Firmware Update Status	<div>Success</div>	01/03/2024 15:36:54	Status	1
Frequency	Frequency	60.009 Hz	01/09/2024 13:00:00	Analog	4
Relay 1 Activation Status	Relay 1 Activation Status	<div>False</div>	01/09/2024 13:00:00	Status	2

TrueCycle Save Profile

TrueCycle Save the Date

- Able to Initiate Save Run Time Profile Request for Dashboard
- Save Today's or Yesterday's Run Time Profile
- Applied to TrueCycle table in device
- TrueCycle table used to adjust the control for each device

The screenshot shows the 'DR Dashboard' interface with a 'TrueCycle - Save Day Profile' dialog box open. The dialog box contains a message: 'Sends a command to all cellular devices for TrueCycle Profile Update for today or yesterday.' Below this, there is a table for updating the profile for three relays.

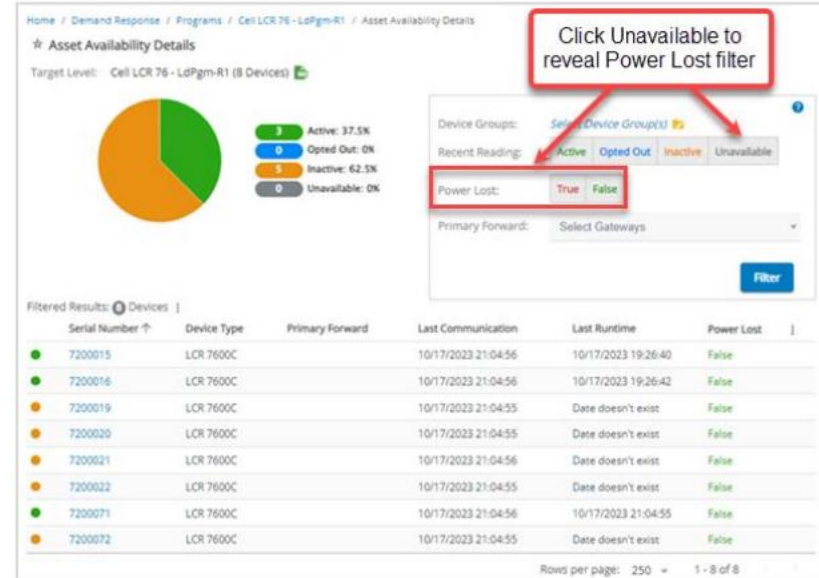
Relay	Update TrueCycle Profile	
Relay 1	Today Yesterday	✖
Relay 2	Today Yesterday	✖
Relay 3	Today Yesterday	✖

At the bottom of the dialog box are 'Cancel' and 'OK' buttons. The background dashboard shows sections for 'Favorites', 'ecobee Statistics', 'Details', 'Recent Event Participation', 'Quick Searches', and 'Recently Viewed Items'.

Power Lost Reporting and Filtering

TrueCycle Save the Date

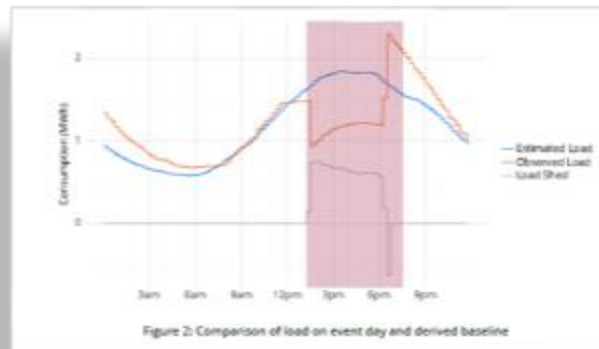
- LCR-7600 reports a “last gasp” prior to power down.
- Possible Reason for Unavailable
- If Power Lost is logical, don't visit
 - AC control in the winter
- Filter Asset Availability with Power Lost state



DR Measurement & Verification Reports

Compare Event to Baseline

- Select Control Event to Analyze
- Comparable Non-Control Day(s) used as Baseline
- Report Shows the results in Graphical and Tabular Views
- Summary of Achieved Load Reduction Provided



Load reduction

Figure 2 shows a comparison between the demand reported on the day of the control event and the baseline derived using historical data. These comparisons are further detailed in Table 1.

- In total, it was estimated that the control event curtailed **12.2MWh** of demand relative to what would have been expected on a similar day without a control event.
- This amounts to **3.2kWh** of load shed per participating device.
- Across all devices, **9,619** total hours of shed time were reported during the control event, representing a maximum potential load reduction of **32.7MWh**
- On average, the baseline load during the time of the event was estimated as **1.8MWh**. Given the participation rate (99.1%), and the load shed proportion (100%), the estimated load reduction during the time of the event was **1.8MW**.

Table 1: Comparison of reported load and estimated baseline on control day

Time of day	Estimated baseline load (MWh)	Reported load on event day (MWh)	Estimated load shed (MWh)
Midnight - 1am	3.6	4.9	0.0
1am - 2am	3.1	4.1	0.0
2am - 3am	2.8	3.6	0.0
3am - 4am	2.5	3.1	0.0
4am - 5am	2.4	3.0	0.0
5am - 6am	2.3	2.8	0.0
6am - 7am	2.4	2.8	0.0
7am - 8am	2.8	2.8	0.0
8am - 9am	3.4	3.3	0.0
9am - 10am	4.0	4.0	0.0
10am - 11am	4.7	4.9	0.0
11am - 12pm	5.5	5.8	0.0
12pm - 1pm	6.2	6.0	0.0
1pm - 2pm	6.8	4.9	1.8
2pm - 3pm	7.3	4.2	3.1
3pm - 4pm	7.6	4.6	2.9
4pm - 5pm	7.6	4.8	2.8
5pm - 6pm	7.5	4.8	2.7
6pm - 7pm	7.0	7.2	0.3
7pm - 8pm	6.5	8.4	0.0
8pm - 9pm	6.1	7.4	0.0
9pm - 10pm	5.7	6.4	0.0
10pm - 11pm	5.0	5.3	0.0
11pm - midnight	4.2	4.4	0.0

Product Update

- Power Line Carrier (PLC)

- History

- Introduced by Westinghouse ~1984
 - Cannon Technologies founded in 1987
 - PC-based Load Management Software utilizing Westinghouse hardware
 - Cannon Purchased manufacturing rights to the hardware from ABB in 1997
 - Introduced solid state meter support in 2004 (MCT-410iL)
 - Cannon acquired by Cooper in 2006
 - Cooper acquired by Eaton in 2013

- Update:

- Customer Success Team
 - Phone Support EXTENDED through 2026 for customers transitioning to Eaton RF or Cellular offerings
 - Phone Support through 2025 for remaining customers
 - Component challenges approaching
 - Equipment availability not expected after 2025
 - CCU-721, RPT-902, RPT-801, MCTs
 - Some inventory of CCU-711 boards



*Celebration
Of
Life*



Powering Business Worldwide

© 2024 Eaton. All rights reserved.


Circa 2007....



Delivering next-generation AMR/AMI solutions. Today.

When choosing a technology partner, it's critical to make the right decision. That's why we design our system for the long haul, and provide support for the long term. Our advanced solutions integrate AMR/AMI, demand response and distribution automation, while reducing installation and operational costs. They combine speed with multi-functionality and easy-to-use browser-based software. And the strength of a S&P 500 company backs all of our technology. So stop waiting for improvements in efficiency, customer service and power quality. And start profiting from them.

Learn more at: www.cannontech.com
Or call: 1.800.827.966



www.cooperpower.com

New Product Development

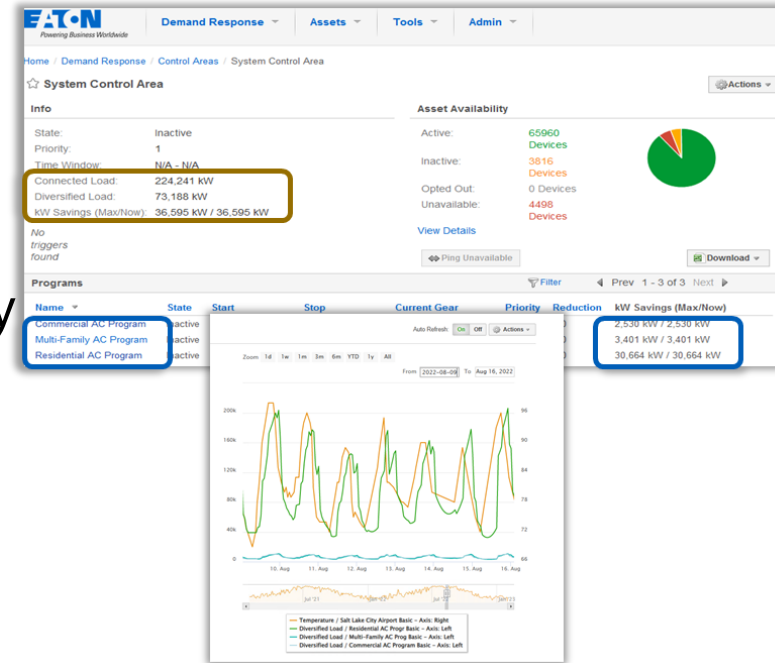
- LCR-7200
 - Same hardware platform as the LCR-7600
 - Board Retrofit in exiting small enclosure products
 - Support Cat-M1 Cellular and Wi-Fi to start
 - Supports up to 2-3A relays for interrupting multiple control circuits.
 - Can support an additional external relay with a 3rd relay driver.
 - Metering options for measuring appliance load.



Future Development

Planned Development

- Dispatchable Load Forecasting
 - Support Current Availability
 - Planned to Forecast Next 36 Hours
 - Incorporate Weather Forecast
 - Use Asset Data to Refine Availability
 - Additional Support for Meter Data



Product Under Consideration

**UNDER
CONSIDERATION**

- Gen II Smart Breaker (Coming)
 - 2 Pole BR Type, 15 – 60 Amps
 - 2 pole GF protection, Thermal magnetic
 - Communications:
 - Wi-Fi
 - Cellular Gateway Option
 - 0.5% Metering Accuracy
 - Classified Listing
 - Integration to Yukon??



Products Under Consideration

**UNDER
CONSIDERATION**

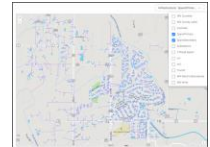
- Enhanced EV Control with and without Disconnect Meters
- Enhanced EV Control with and without Disconnect Meters
- Asset Monitoring and Alarming
 - Short Cycle Detection
 - Water Heater Leak Detection



Products Under Consideration



- Yukon Dynamic Dispatch – Attributes
- Yukon w- SMP Control of DG Resources
- Interactive Mapping Visualization of System



What Products/Features would you like to see?

- Including Hardware, Software, Analytics, or Services



Wrap Up



Powering Business Worldwide

Eaton.com/WhatMatters